



2022

STUDENT
INFORMATION
HANDBOOK

*Tamworth High School is an inclusive centre of innovation,
creativity and excellence.*

WELCOME TO TAMWORTH HIGH SCHOOL

Tamworth High School has a rich history of promoting innovation, creativity and excellence. Our school prides itself on providing a diverse range of opportunities for individual success. We offer a dynamic curriculum in a responsive, caring and flexible learning environment.

While believing in tradition, we are also a school that actively prepares our students for life in the 21st Century. Students have access to an extensive computer network and teachers and students regularly use a variety of technologies to engage in teaching and learning. We pride ourselves on maintaining a Student Wellbeing Team that is committed to supporting all students and their endeavours. In all that we do, the interests and wellbeing of our students are our first priority.

Tamworth High School operates on a *Stage* model to develop a modern, relevant and inclusive curriculum, and has a highly successful Support Unit that caters for students with special needs. Our Gifted and Talented program caters to a wide variety of students from not only our school but our local primary schools, in such areas as Music, English, Maths, Science, Dance, Drama and Visual Arts. Through our accelerated learning program we have forged enduring links with our partner primary schools, resulting in students sitting High School Certificate subjects earlier than their peers. The opening of the multi-million dollar Trade Training Centre in 2012 has provided new state-of-the-art training facilities for vocational courses.

We foster an atmosphere of excellence and maintain the high expectation that our students are Safe, Respectful Learners. Students participate in highly successful leadership programs such as the Student Prefect body, the Student Representative Council, Interact and the Junior AECG. These opportunities are available to all who choose to participate fully in the life that Tamworth High School has to offer.

Tamworth High School is an inclusive centre of innovation, creativity and excellence.



THS EXECUTIVE 2022

Senior Executive

Principal
Deputy Principal Years 7, 9, 11
Deputy Principal Years 8, 10, 12

Mr Keith Leyshon
Mr Sam Langston
Ms Megan Marshall

Head Teachers – Curriculum

English
HSIE
CAPA
Mathematics
Science / Agriculture
Support
Technology Applied Sciences (TAS)
PDHPE

Ms Gina Ostle
Mrs Erinn Scott
Ms Kristina Poder
Ms Kelly Cornwell
Mr James Ewin
Ms Brooke Handsaker
Mr Andrew Urquhart
Ms Steph Halpin

Head Teachers – Non Curriculum

Student Wellbeing
Administration
School Administration & Support Staff (SASS)
Aboriginal Learning and Engagement
Teaching and Learning

Mr Steve Lasscock
Mr Hayden Merrick (Rel)
Ms Simone Power
Mr Anthony Walmsley
Mr Shane Vesey-Wells

THS Year Advisors

Year 12 Adviser
Year 11 Adviser
Year 10 Adviser
Year 9 Adviser
Year 8 Adviser
Year 7 Adviser
Boys Adviser

Mr Thomas Guihot
Ms Marnie Didlick
Mrs Amanda Simmonds
Ms Simone Googe
Mr Aaron Woodland
Ms Casey Deaves
Mr Bryan Warren

TERM DATES 2022

Term 1 (*Ten Week Term*)

Begins for Staff – Friday 28 January 2022
Begins for Prefects, Year 7, Year 11 and new students enrolling – Tuesday 1 February 2022
Begins for Students Years 8, 9, 10, 12 – Wednesday 2 February 2022
Ends for Staff and Students – Friday 8 April 2022

Term 2 (*Ten Week Term*)

Begins for Staff – Tuesday 26 April 2022
Begins for Students – Wednesday 27 April 2022
Ends for Staff and Students – Friday 1 July 2022

Term 3 (*Ten Week Term*)

Begins for Staff – Monday 18 July 2022
Begins for Students – Tuesday 19 July 2022
Ends for Staff and Students – Friday 23 September 2022

Term 4 (*Eleven Week Term*)

Begins for Staff and Students – Monday 10 October 2022
Ends for Students and Staff – Monday 19 December 2022

SCHOOL FEES 2022

General Contribution

General school contribution for all Years in 2022 will be \$90.00 per year.

We encourage the payment of the School Contribution, which covers a range of services for students and all paper for photocopying.

When students choose a course with subject fees they are agreeing to pay all costs associated with the subject. This includes a course fee plus the costs of all materials to complete the course.

Families experiencing difficulty in paying school fees may arrange to pay in instalments or seek support via the Student Assistance Scheme. Please enquire at the Front Office for an application form. All requests are completely confidential.

Elective Subject Fees

Elective subject fees pay the costs of materials that must be used to enable students to complete the practical work in a course. Students use or consume the materials themselves.

The elective subject fee is used to pay for such items as:

- Food ingredients in Food Technology
- Wood and Metal in Industrial Technology
- Makeup and costuming in Drama
- Special booklets for LOTE
- Paints, clay and tools in Visual Arts
- Film, chemicals and paper in Photography



DAILY ROUTINE

- The timetable is based on a 10-day cycle, divided into Week A and Week B
- SRE/Scripture will run at one time in the 10 week cycle, on Monday A – Period 5. Students who do not participate in SRE are able to sign out of school at the end of Lunch (2:20pm).
- Sport is run as a whole school activity, occurring on Wednesday from 1:20pm

Monday, Tuesday, Thursday, Friday	Times
PREP	9:00am – 9:20am
Period 1	9:20am – 10:20am
Period 2	10:20am – 11:20am
Recess	11:20am – 11:50am
Period 3	11:50am – 12:50pm
Period 4	12:50pm – 1:50pm
Lunch	1:50pm – 2:20pm
Period 5	2:20pm – 3:20pm

Wednesday (Sport Day)	Times
Whole School Assembly in Quad	9:00am – 9:20am
Period 1	9:20am – 10:20am
Period 2	10:20am – 11:20am
Recess	11:20am – 11:50am
Period 3	11:50am – 12:50pm
Lunch	12:50pm – 1:20pm
Sport	1:20pm – 3:20pm

SCHOOL SERVICES

Front Office

All visitors must report to the Front Office upon arrival.

Office hours are from 8.00am to 4.00pm on school days. Please telephone 6765 7888 during these hours to make appointments with staff or for general enquiries. Payment of any monies (e.g. school contribution, elective fees, excursion costs, etc.) are made at this office.

The Hive

Office hours are from 8.30am to 3.30pm on school days.

The Hive provides a wide range of services to students from its B Block location, including:

- Signing in when arriving late
- Obtaining partial absence to leave school early
- Assistance with Timetables and getting to class
- Access to our Wellbeing team, who can provide Wellbeing support, counselling, advice and guidance.
- Uniform assistance
- Fresh fruit

Student Support

Sue Warden is the Student Support Officer (SSO) for our school. The SSO works as part of our Student Wellbeing team located at The Hive. The SSO's main priority is to promote students' healthy wellbeing and undertakes the positions of advocate, listener and mentor. A student might be referred to the Student Support Officer for support in areas such as bullying, developing self-esteem, resilience, anger management, conflict resolution and coping skills, mediation, or to be connected to local external support and youth services. Students can self-refer to see the SSO or be referred by staff and family members.

School Counsellor

The School Counsellor is available to talk with students or parents/carers on most school days by appointment through the Front Office.

Student Assistance Scheme

A special fund is set aside to assist junior students whose families are having financial difficulties. Confidential enquiries about assistance with purchasing uniforms, school equipment, payment of elective fees, excursion costs, etc. should be directed to the Front Office or Student Year Adviser on 6765 7888.

Library

The Tamworth High School Library is extremely well equipped with over 40,000 items on its shelves. The spacious design of the library provides an ideal place for students to work on assignments, relax with a book or magazine, use the computer network, including the Internet, or just browse the shelves. All Year 7 students are given lessons on how to use the library by the teacher Librarian, Melissa Leyshon. The library staff are always on hand to help with any enquiries.

Homework Centre

The Tamworth High School Homework Centre operates out of the Library every Wednesday afternoon during school terms from 3.20pm to 5.00pm. Teaching staff are on hand to assist students with their homework along with access to computers.

Canteen

Tamworth High School has a school run canteen for students to access before school and during both breaks. Lunch orders can be placed before school for either break periods.

If you or a friend, Grandparent, Aunt or Uncle, are in a position to assist in the Canteen it would be greatly appreciate, please complete the Volunteer Registration Form enclosed in this package and return to the Front Office.

Careers Adviser

The Careers Advisor is located in the library. There is a wide range of pamphlets, career information booklets, tertiary requirement handbooks, application forms, etc. available. Students, particularly seniors, can visit the Careers Advisor, Ms Nicole Schafer during school hours.

Aboriginal Education Team

Our Aboriginal Education Team can be contacted at the school on 6765 7888. Students can visit the team in the Aboriginal Education Room upstairs in B Block, during breaks.

STUDENT ATTENDANCE

Tamworth High School is a comprehensive public school that serves its local community. It recognises that attendance is central to all academic and wellbeing issues. The responsibility for encouraging and monitoring high standards of attendance and punctuality is shared amongst the whole school community including staff, students and parents/carers.

The legal basis for compulsory school attendance is located specifically within the principles established in the *Education Act 1990*, which states that all children between the ages of 6 and 17 must attend school each day that school is open, unless specific exemptions apply. The Act also applies principles in terms of attendance registers that are to be marked accurately on a daily basis.

There are two other issues relating to school attendance. The first is that schools have a duty of care to their students. The maintenance, monitoring and communication of attendance information to the relevant persons form part of that duty. The second is that good attendance links directly to good learning.

Parents/Carers Responsibilities:

Parents/Carers are *legally responsible for the regular attendance of their children*.

- Send students to school on every day instruction is provided
- Promote a positive attitude towards school attendance
- Provide written or verbal explanations for each absence from school within seven (7) days
- Co-operate with Tamworth High School's Student Attendance Policy
- Take measures to resolve attendance issue involving their student/s

Student Responsibilities:

- Attend school punctually on each day that instruction is provided
- Attend all lessons punctually
- Remain in class at all times unless given express permission to leave
- Bring notes from Parents/Carers to explain absences
- Co-operate with Tamworth High School's Student Attendance Policy

EXEMPTION FROM ATTENDANCE

An Exemption from Attendance at School form is available from the school, an application may only be approved **before** the period of leave and cannot be backdated.

Reasons for granting full day exemptions from attendance at school:

- exceptional circumstances (including the health of the student where sick leave or alternative enrolment is not appropriate)
- employment in the entertainment industry
- Participation in elite arts or elite sporting events

WHAT TO DO IF MY STUDENT IS ABSENT FROM SCHOOL

If the date/s of absences are known beforehand, call, email, or send a note with the student to the school BEFORE the date, giving date/s of absences and reasons for absences.

If the absence is unexpected, call, email, or send a note with student to the school within seven (7) days of the absence.

Please note:

- any information received after seven days CANNOT be accepted because the reason for the absence cannot then be legally changed.
- letters are sent home in the mail for whole day absences. These should be signed by the parent/carer, a reason given, and returned to the school within seven (7) days
- students who are late to school MUST go to The Hive to sign in, this generates a late to class slip and a note for parents/carers. This note should be taken home, signed by the parent/carer, a reason given, and returned to the school within seven (7) days

LEAVING SCHOOL DURING THE DAY

The process is:

- Take a signed note, from the student's parent/carer, providing the reason for a leave pass to The Hive between 8.30am and 9.00am. The note must indicate the date and time the student is requesting to leave, if the student is returning, the student's year group and a parent/carer contact number.
- Students collect their Leave Pass from The Hive at Recess 1. This note is used to allow the student to come out of class at the allotted time.
- Random Monitoring of leave notes is conducted to support families in this process.

SENIOR STUDENTS

Senior students are offered the privilege of flexible leave arrangements at the beginning or end of the school day as outlined in the Senior Learning Policy.

Senior students are required to –

- Submit a Senior Leave Application form to The Hive at the beginning of each term – these forms are available from The Hive and will be checked against student academic and behaviour records.
- Sign in at The Hive if arriving late and/or sign out at The Hive if leaving early, after the relevant form has been completed.

SICK BAY

Students need to let their classroom teacher know if they are unwell and they will be given a note to take to the Front Office, where parents/carers will be contacted to pick them up.

If a student is unwell at home, please do not send them to school.

Students should not phone parents/carers to pick them up (please refer to the Technology, Mobile Phone and Personal Electronic Devices Policy).

If any new medical conditions are diagnosed (e.g. asthma, epilepsy, heart condition, diabetes, etc.) the school needs to have written notification from the treating Doctor, as well as a health care plan for the school to follow when needed.

EMERGENCY & HOME DETAILS

It is imperative that the school be contacted either by note or a telephone call (phone 6765 7888) if there are any change of address, telephone number or any emergency contact details at any time during a student's stay at Tamworth High School. This will alleviate any problems when we need to contact a parent/carer especially if a student is sick or there is an emergency.

MEDICATION

If students need to take prescribed medication during school hours, parents/carers are required to complete Medication Forms, available from the Front Office. This form is required for each new medication, including a change to generic brands.

The prescribed medication is to be brought to the Front Office with the medical details and student name clearly labelled. It is highly recommended for ease of distribution that medication is provided to the front office in a Webster Pac prepared by the chemist.

For one off illnesses, please bring only enough medication to last for either the duration of the illness or each week.

The student is responsible for coming down to the Front Office at the required time..

PERMISSION TO PUBLISH

Tamworth High School and the Department of Education may publish information about a student for the purposes of sharing their experiences with other students, informing the school and broader community about school and student activities or recording student participation in noteworthy projects or community service.

This information may include a student's name, age, class and information collected at school such as photographs, sound and visual recordings of a student, a student's work and expressions of opinion, such as in interactive media.

The communications in which a student's information may be published include but are not limited to:

- Public websites of the Department of Education, including the school website, the Department of Education intranet (staff only), blogs and wikis.
- Department of Education publications, including the school newsletter, annual school magazine and school report, promotional material published in print and electronically, including on the Department of Education's websites.
- Official Department of Education and school social media accounts on networks such as YouTube, Facebook and Twitter.

Parents/Carers should be aware that when information is published on public websites and social media channels it can be linked to by third parties and may, therefore, be discoverable online for a number of years, if not permanently. Search engines may also cache or retain copies of published information.

The Permission to Publish form is included in the General Permissions Booklet which is distributed to all students at the beginning of each school year.

SUPPORTING STUDENT LEARNING

All students at TAMWORTH HIGH SCHOOL are expected to act with courtesy, show respect to all and engage with learning in every lesson. Students who are able to do this, demonstrate the ability to regulate their own behaviour and will be recognised for this positive contribution. A student who is unable to regulate these behaviours; fails to complete their work, behaves in a negative manner or is not punctual to class, will move through the support system outlined below.

STUDENT SELF REGULATION

- Student has correct equipment for lesson
- Student is able to follow instructions
- Student is focused on producing quality work
- Student avoids distracting and distractions
- Student responds positively if corrected
- Teacher recognises continued positive behaviour

TEACHER SUPPORT

STEP ONE:

- warning given either verbally, written or non-verbally

STEP TWO:

- Repeat warning if behaviour continues; re-state expected behaviours and consequence.

STEP THREE:

- Teacher tells student to remain at end of the lesson/break (10 min recommended)
- Reflection completed to facilitate a conversation about student behaviour.
- Restate expectations.
- Record on SENTRAL

STEP FOUR:

- Student placed on Teacher Support Card for serious or repeated negative behaviours across a series of lessons.
- Phone call to parent/caregiver to notify and seek support.
Record on SENTRAL

STEP FOUR:

- Continued negative behaviours across series of days/lessons result in referral to Head Teacher by Classroom Teacher.

HEAD TEACHER SUPPORT

STEP ONE:

- Head Teacher to interview student to meet to discuss the ongoing or serious behaviour
- Individual Plan for behaviour created
- Head Teacher contacts parent/caregiver regarding escalation of card and negotiated plan.

STEP TWO:

- Head Teacher may create alternative timetable, playground withdrawal or other negotiated consequence for student with continued misbehaviour

STEP THREE:

- Student referred to Deputy Principal if behaviours continue within week.

DEPUTY SUPPORT

STEP ONE:

- Deputy to issue Formal Caution in SENTRAL relating to continued disobedience.
- Deputy interview student to issue warning and establish Deputy Support Card.

STEP TWO:

- Deputy may create alternative timetable, playground withdrawal or other negotiated consequence for student with continued misbehaviour

STEP THREE:

- Student referred to Principal for possible suspension if behaviours continue within week.

**YOU ARE FREE TO CHOOSE HOW YOU BEHAVE
BUT YOU ARE NOT FREE FROM
THE CONSEQUENCES OF YOUR CHOICES**

PROCEDURES FOR REPORTING INCIDENT OF BULLYING

Parent Reporting

Parents, who feel that their child may be a victim of bullying, should contact the school. The Head Teacher Student Welfare or Student Support Officer, Year Adviser or any staff member are willing to receive information so that the school gets early advice of the incident and can respond in the appropriate manner. At this time, the school procedures for dealing with these incidents will be discussed with the parent. It is essential that the school and the family work together to resolve this matter, and to provide the support needed to the child.

Student Reporting

All reports made by students to staff will be investigated appropriately. Students are encouraged to report any incident that they either observed or are involved in, the following is advised:

- In the classroom: to the classroom Teacher or the Head Teacher of that faculty. Student Learning Support Officer / Aboriginal Education Officer
- In the playground: to the Teacher on duty, or the Head Teacher in the playground.
- At sport: to the supervising teacher.
- By completing the Bullying/Harassment Report and placing the report into the box attached to the Student Services Officer's office door.

In most cases, students will be required to complete a Bullying/Harassment Report, which is available from:

- Head Teacher Student Welfare
- Student Support Officer
- The Hive
- Front Office

Students will be given assistance to complete the report where necessary. A Bullying/Harassment Report can also be completed by those who observe incidents that are of concern to them eg. student witnesses, members of staff, or parents and carers. Completed reports can be given to any staff member where they will hand the report to the Head Teacher Student Welfare or Student Support Officer.



SCHOOL COMMUNITY COMMUNICATION

Website and Facebook Page

Tamworth High School has a Facebook page which provide valuable information and updates on what is happening in and around our school. All parents/carers are encouraged to like us on Facebook and check our website for all the latest information.

Our website address is <http://www.tamworth-h.schools.nsw.edu.au/>

Compass Parent Portal

The Compass Parent Portal is an online system for parents which allow's access to information about their student and allows parents/carers to provide information to the school.

Features include:

- Attendance
- School Reports
- Student Timetable
- Booking of Parent/Teacher Interviews
- Student Plans
- Notification of Absences
- Notification of Change of Details

Families of Year 7 students will be issued with their registration and log in details for compass during Term 1 of 2022.

SCHOOL UNIFORM

Summer Uniform – Terms 1 and 4

Junior Girls

Shirt	Sky blue, short sleeved, button through blouse with school crest on left side
Skirt / Shorts	Medium blue tartan skirt with inverted pleats front & back or black shorts
Socks	Short, white
Hat	School hat



Junior Boys

Shirt	Sky blue, short sleeved, button through shirt with school crest on left side
Shorts	Grey cotton/drill, cotton/polyester or polyester/viscose/rayon but not in corduroy
Socks	Short, white
Hat	School hat



Senior Girls

Shirt	White, collared, button through blouse with short sleeves and school crest on left side
Skirt / Shorts	Dark blue check pattern skirt or black shorts
Socks	Short, white
Hat	School hat



Senior Boys

Shirt	White, collared, button through shirt with short sleeves and school crest on left side
Shorts	Grey cotton/drill, cotton/polyester or polyester/viscose/rayon but not in corduroy
Socks	Short, white
Hat	School hat



Winter Uniform – Terms 2 and 3

Junior Girls

Shirt	Sky Blue, collared, button through with long sleeves and school crest on left side
Tie	Tamworth High School Junior Tie
Jumper	Black V Neck, Sloppy Joe or Hoodie
Skirt	Black "A" line, with two inverted kick pleats in front, in plain polyester and wool or gabardine.
Slacks / Trousers	Black polyester/gabardine tailored style
Socks / Stockings	Black
Hat	School hat



Junior Boys

Shirt	Sky Blue, collared, button through with long sleeves and school crest on left side
Tie	Tamworth High School Junior Tie
Jumper	B Black V Neck, Sloppy Joe or Hoodie
Slacks / Trousers	Grey cotton/drill, cotton/polyester or polyester/viscose/rayon but not in corduroy
Socks	Black
Hat	School hat



Senior Girls

Shirt	White, collared, button through with long sleeves and school crest on left side
Tie	Tamworth High School Senior Tie
Jumper	Black V Neck, Sloppy Joe or Hoodie
Skirt	Blue Tartan "A" line skirt with two inverted pleats in front
Slacks / Trousers	Black polyester/gabardine tailored style
Socks / Stockings	Black
Hat	School hat



Senior Boys

Shirt	White, collared, button through with long sleeves with school crest on left side
Tie	Tamworth High School Senior Tie
Jumper	Black V Neck, Sloppy Joe or Hoodie
Slacks / Trousers	Grey cotton/drill, cotton/polyester or polyester/viscose/rayon but not in corduroy
Socks	Black
Hat	School hat





Hoodie (All Years)



Black V Neck (All Years)

Optional

Black Blazer, Tamworth High School Spray Jacket (see photograph on next page) or North West Sports Jacket, no other representative attire is acceptable.

SPORTS & PHYSICAL EDUCATION UNIFORM

The boys and girls both wear the same Sports and Physical Education uniform. Students must wear full sports uniform on their allocated sports day.

Shirt	Sky blue polo shirt with school crest on left side – may have school or North West insignia
Shorts	Plain black, loose fitting with waistband or drawstring
Tracksuit	Plain black tracksuit pants with THS embroidery. School jumper or sloppy joe or jacket. North West Tracksuits are acceptable.
Socks	Any combination of white and/or blue and/or black
Shoes	Sports shoes



FOOTWEAR

Tamworth High School expects students to follow Department of Education and Communities Policy and the NSW Work Health and Safety Act 2011 by wearing enclosed leather, lace-up, buckle or Velcro fastened shoes. They must cover the whole top of the foot and have a low heel. Please refer to the attached Footwear Guidelines for NSW Government Schools.

Students must not wear skate shoes, black soft ballet style shoes, open top Mary-Jane shoes, canvas or similar material type shoes. If you are not sure what footwear is acceptable then please consult the school before buying new shoes. A salesperson at a shoe shop will not necessarily give you the correct advice in terms of approved school styles. Please check with the school.

Shoes must be of a firm leather type black shoes with all leather uppers and enclosed leather tongue to satisfy safety requirements. Failure to wear these type of shoes may result in temporary exclusion from a practical subject and Sport.

Examples of **acceptable** footwear:



Examples of footwear that is **not suitable** for **technology** classes:



Examples of **unacceptable** footwear:



Important note about footwear

The Department of Education and Communities has strict safety rules about shoes that are suitable for school wear. Tamworth High School has adopted, as part of its uniform code, the wearing of standard black shoes with all leather uppers and enclosed leather tongue. Mary Jane shoes or sneaker style shoes, which have leather uppers that are composites of leather and vinyl or fabric, **do not meet safety requirements and are not acceptable.**

SCHOOL COMMUNITY

Student Representative Council (SRC)

Students are elected to the Student Representative Council as representatives of their peers. They participate in regular SRC meetings where social issues and student concerns are discussed and appropriate action taken. Some of the SRC activities include: fundraising, discos, uniform changes, financial assistance for students representing the school and improvements to the school environment and facilities.

Prefects

One of the highest honours at Tamworth High School is to be elected as a Prefect. Following elections in Term 3 of Year 11, the Prefects participate in a three day Leadership Training Camp. The school captains for the following year are elected by the Prefects after this camp. Prefects are inducted at the beginning of Term 4.

Concert and Stage Bands

Tamworth High School has a wonderful tradition of instrumental music. We have a Concert Band which involves students from our Partner Primary Schools through to Year 12. Students attend the Regional Band Camp and are regularly selected to represent Tamworth High School at state level.

Choir and Vocal Groups

Tamworth High School has a Choir and small vocal ensemble which perform at school functions and Eisteddfods. Students also participate at regional level. Some well-known ex-students include Felicity Urquhart, Jarod Scott, Ben Hazell and Roshani Priddis.

Junior AECG

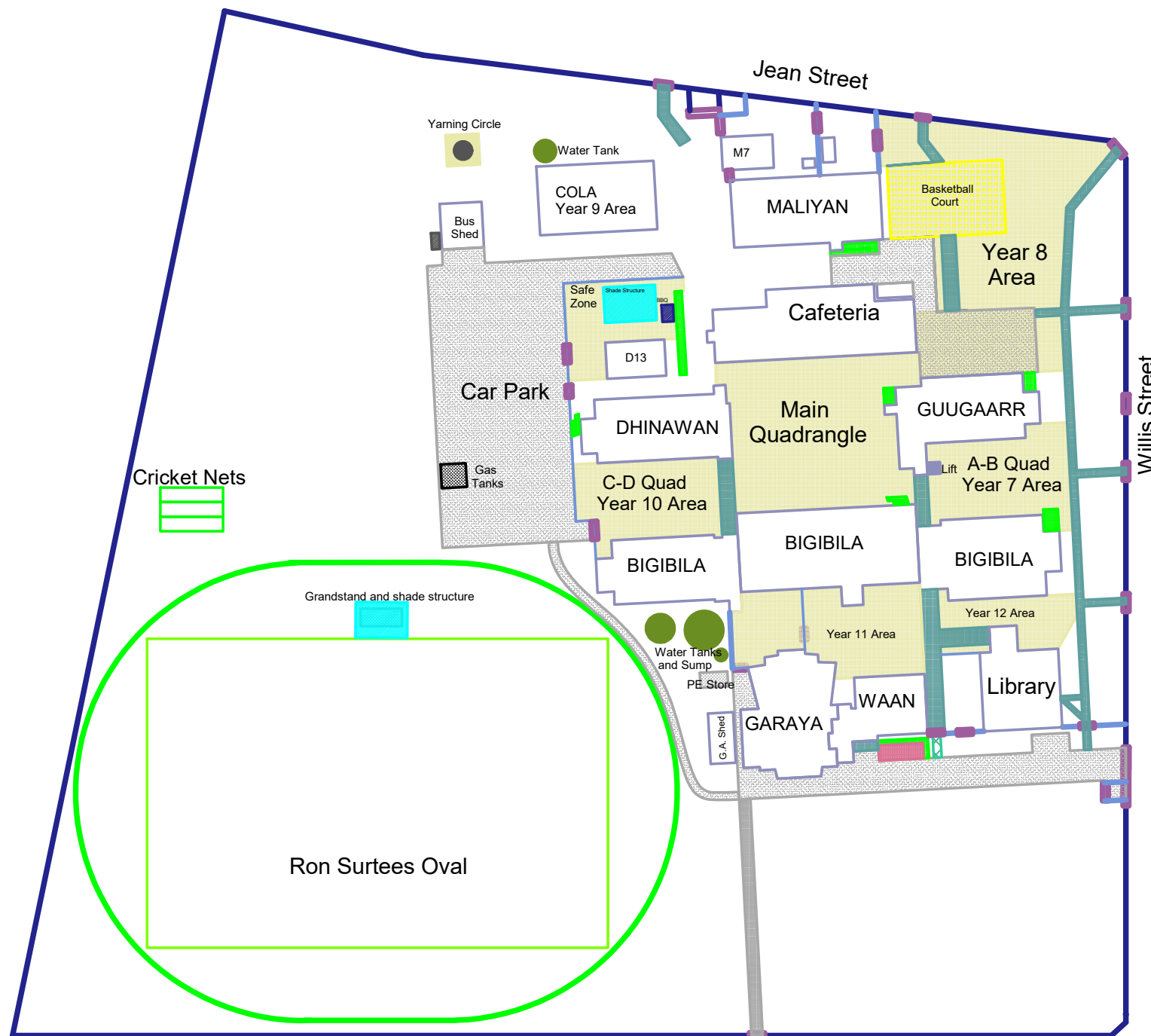
The Junior Aboriginal Education Consultative Group (AECG) meet twice a month to discuss how to help Aboriginal students from Years 7 to 12 become more involved in decision-making for Aboriginal Education.

Parents and Citizens Association

The Parents and Citizens Association (P&C) at Tamworth High School plays a vital role in the life of the school. It provides a voice for parents/carers in the ongoing development of the school and acts in a consultative capacity with issues such as school policy, financial management and school fundraising.

Most importantly, the monthly P&C meeting provides a forum for discussion about the current operations of the school and planning for the future, to meet the needs of our students.

Meetings are held the third Tuesday of every month, during the school term between February and November at 6:30pm in the School Library. A warm invitation is extended to all parents/carers of students to attend.



Disabled access ramps



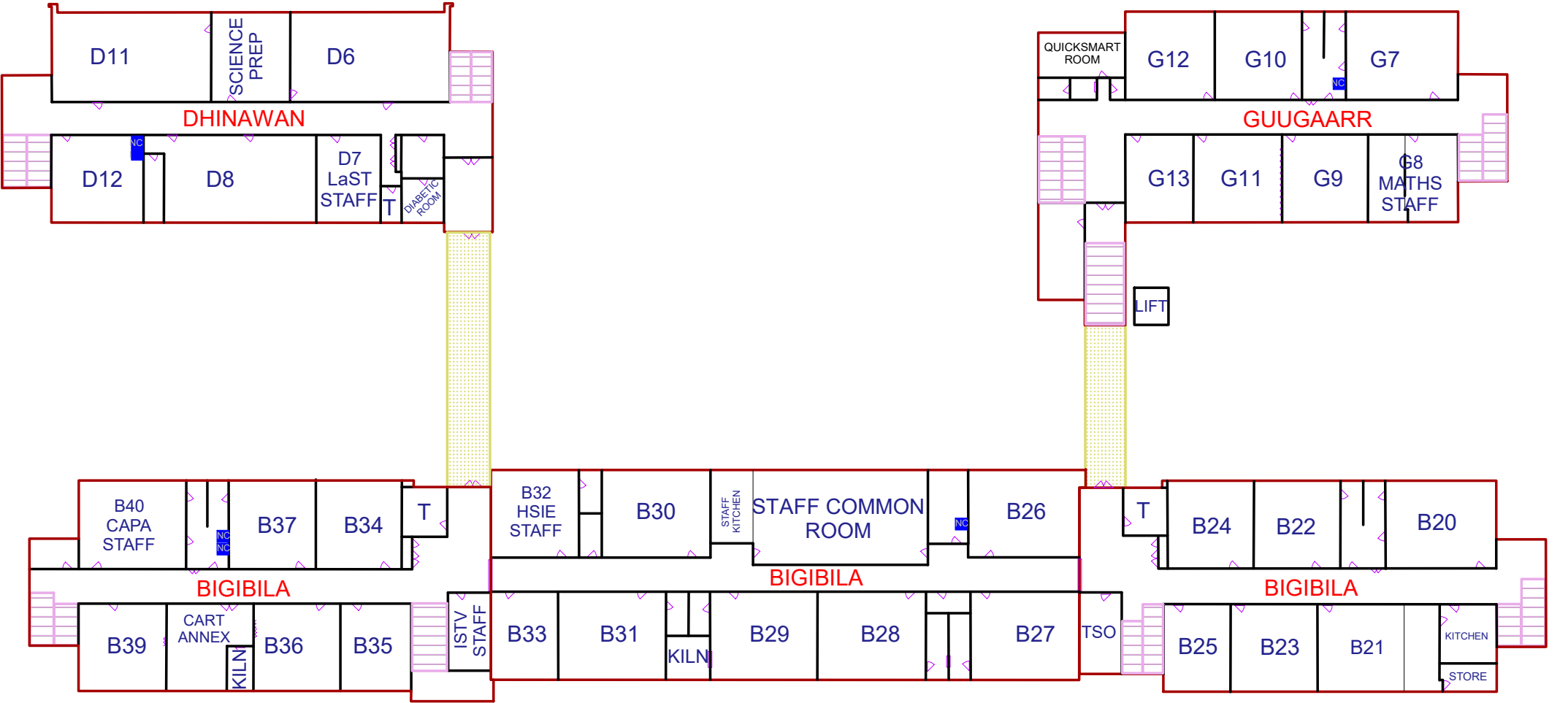
Kathleen Street

Tamworth High School

Version 1

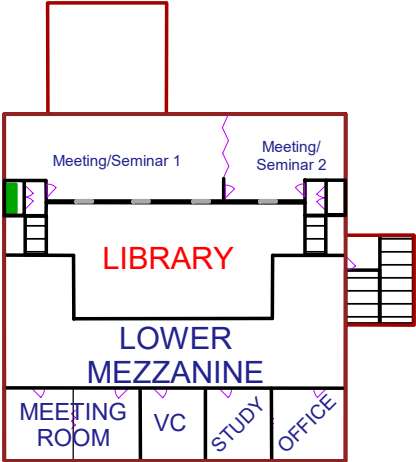
28/01/2022





*TAMWORTH HIGH SCHOOL
FIRST FLOOR ROOMS*

THS FIRST FLOOR ROOMS
VERSION 1 - 2022



SPORT

Sport and Education

Sport is a Department of Education & Communities requirement for students in Years 7 to 10. Students who cause concern due to their behaviour will be required to attend sports detention.

Sport for Year 7 – 10 is conducted at the same time each week 1:20 pm to 3:20 pm every Wednesday. Sport activities are held at school and off site at various sporting venues. Towards the end of each term, students will be provided the opportunity to select their preferred sport from the options available to them. There are paid and non-paid options to cater for all students.

SPORTS UNIFORM IS ONLY TO BE WORN ON DESIGNATED SPORT/PE DAYS.

Sports Organiser

The Sports Organisers are Mr Ben Merrick and Mr Kurt Hartman. Students who are sick, injured, without money or have any other problems relating to sport are to contact either Mr Merrick or Mr Hartman in the PDHPE staffroom before school or during recess on the day they have sport.

Venue and Transport Costs

All students will be put into groups and will rotate through a range of sports in each term. These sports will be a mixture of free and paying activities. For sports that incur a fee, students will have the option to pay on a weekly basis or in advance at the start of the term.

Team Sports

Team Sports are an important part of the Sporting program at Tamworth High School. The school enters a number of teams into various local and state competitions. Tamworth High School has a proud tradition of sporting success. An individual manager runs each team. For further information please telephone Ms Danielle Abbott.

Carnivals

Hayden Merrick organises the three major whole school carnivals: Swimming, Cross Country and Athletics. Students who are successful in these carnivals have the opportunity to go on to regional competition levels.

ADDITIONAL ACTIVITIES

Tamworth High School has a fine tradition of students excelling in a broad range of activities beyond the core curriculum.

We have committed sporting teams, with regular success at the local, regional and state levels, and a number of ex-students have represented the nation at Olympic and International level.

Performances are regular events at Formal Assemblies, special events and Presentation Night for the Concert Band, Stage Band, Vocal Ensembles, Percussion Groups, Musical Soloists, Dance Groups and Soloists, Drama Groups, Public Speakers and Debaters. School Productions, Eisteddfods, and local and state competitions also provide opportunities for students to develop and present their leadership and teamwork abilities, as well as their talent.

Close links with our local Primary Schools also means our students are regularly involved in supporting both students and staff from other schools with their swimming carnivals, musical productions and talent nights.

Through the Agriculture program, students can develop confidence and the ability to work with sheep and cattle, parading them at various shows, work with farm equipment and animals on the Agriculture plot, as well as developing other practical skills.

SPECIAL RELIGIOUS EDUCATION

A feature of the public education system in NSW is the opportunity to provide time in class for education in ethics, faith and morality from a religious or non-religious perspective at the choice of parents.

Students and their parents/carers are given the opportunity to choose from five options Tamworth High School provide, taking place every second Monday, period 5 (2.20pm to 3.20pm). A parent/carer may at any time notify the school in writing that they wish to change their decision.

The options are:

- Your child will participate in Special Religious Education: SRE Provider is Armidale Diocese Anglican Church
- Your child will be supervised at school in the quad
- Your child will be involved in Community Service Activities during this time
- Your child will be in the homework program in the library during this time
- Your child will be dismissed from school during his time and return home.

THS P & C ASSOCIATION INC.

Our Parents and Citizen's Association Inc. welcome everyone to attend the meetings and new ideas are welcome and valued. This is a great opportunity to hear what is going on at school and to help support the students.

Meetings take place on the 3rd Tuesday of each month in the school Library (enter via Willis Street), light refreshments are provided.

Starting Time: 6:30pm for approximately one hour.

Meeting Dates for 2022 will be advertised on the Tamworth High School Website and Facebook Page.

Cost to become a member: \$2.00 (set at each AGM).

Please join with other parents/carers and participate in the school community as part of the P & C.

P & C Email - secretarythspandc@gmail.com

P & C Country Music Camping - Camp Tamworth High

During the Tamworth Country Music Festival the school and P & C, rent camping and caravan spots at a reasonable cost. Each afternoon Prefects, senior students and parent/carer volunteer's work together to clean the facilities. For further information regarding camping contact the coordinator via email at thsp&c@gmail.com.

<https://sites.google.com/view/campths>

TECHNOLOGY, MOBILE PHONE & PERSONAL ELECTRONIC DEVICES

The widespread ownership of technology among young people requires Tamworth High School to ensure that it is used responsibly at school.

Tamworth High School has established the Technology, Mobile Phone & Personal Electronic Devices Policy to cover all personal electronic devices to provide teachers, students and parents/carers clear guidelines and instructions for the appropriate use of these devices during school hours and whilst travelling to and from school. Students and their parents/carers are advised to familiarise themselves with this policy before students are given permission to bring mobile phones to school. This policy also applies to students during school excursions, camps and co-curricular activities.

The Tamworth High School Technology, Mobile Phone & Personal Electronic Devices Policy is designed to work in conjunction with the Department of Education Acceptable Use Agreement that all students and parents/carers are required to sign before being provided access to various forms of technology whilst at school.

The Acceptable Use Agreement seeks to ensure that students and parents/carers understand the various requirements associated with:

- the use of technologies provided by Tamworth High School, and
- the Department of Education and the use of privately owned technologies such as mobile phones.

For further information please refer to the Technology, Mobile Phone and Personal Electronic Devices Policy.

BUS COMPANY INFORMATION

Travel by bus to school is available to eligible students. Details of requirements can be obtained by contacting the bus companies.

Bus Company

Hannafords Bus Service
Ph 6765 1900

MacPherson's
Ph 6760 7190

BusBiz
Ph 6766 4418

Tamworth Buslines
Ph 6762 3999

Serviced Area

Sussex St, Tingira St, Mack St, Kenny Dr, Green St, MacGregor St, Lawson Pl, Mitchell St, Wallamore Rd; Gowrie; Duri; Wallabadah; Bithramere; Dangar Cres, Telfer Rd, Regan Rd, Colwell Rd; Loomberah; Kingswood; Burgmans Lane; Pages Lane; Westdale: Old Winton Rd.

Somerton, Moore Creek, Limbri.

Nundle, Woolomin, Dungowan, Loomberah and Ogunbil.

North & East Tamworth, Oxley Vale, Kootingal, Moonbi, Bendemeer, Manilla, Calala, Quirindi, Werris Creek, Duri, Currabubula, Hallsville, Attunga.

CURRICULUM – YEARS 7 & 8 (STAGE 4)

Students in Years 7 & 8 are required to complete specific courses to meet the Board of Studies' rule to achieve a Record of School Achievement (RoSA) following the completion of Year 10.

These include two years of study in:

- English
- Mathematics
- Science
- Human Society and Its Environment (HSIE)
- Creative and Performing Arts
- Personal Development/Health/Physical Education
- Technology
- Languages Other Than English (LOTE)

Assessment and Reporting

Students are continually assessed on their performance in courses. Assessment information is used to produce school reports, which are issued to students at the end of each semester for delivery home.

Reports for students in Stage 4 contain information on the student's achievement of outcomes and work skills during that semester.

Flexible Progression

Unique structures in the school allow students to follow flexible progression in courses in which they have demonstrated an outstanding level of achievement of outcomes.

4C Success

This program is focused on cross-curriculum enrichment and building the skills and knowledge of students in a learner centred environment. Students are taught by a team of teachers who work together to deliver content that is connected across their subject areas. This allows for students to build upon skills in other areas as they learn. As the class brings together students with a broad range of gifts and talents, it is our aim to enrich our students as individuals and encourage learning that works with the gifts and talents of others.

Best Start

Best Start Year 7 addresses a key element in the NSW Government's Literacy and Numeracy Strategy 2017 – 2020 and is mapped to the NSW Syllabuses and National Literacy and Numeracy Progressions.

Best Start Year 7 will help with identifying students who may require additional support in the development of key literacy and numeracy skills that are fundamental to their success in all subjects in secondary school. Feedback from the assessment will also provide secondary teachers with information to support targeted teaching strategies that meet the learning needs of their students.

The Best Start Year 7 assessment includes two online assessments:

- literacy assessment
- numeracy assessment

Each assessment is designed to be quick to administer, consisting of 30 multiple choice questions.

CURRICULUM – YEARS 9 & 10 (STAGE 5)

Students in Years 9 & 10 are required to complete specific courses to meet the Board of Studies' rule to achieve a Record of School Achievement (RoSA) following the completion of Year 10.

These include two years of study in:

- English
- Personal Development / Health / Physical Education
- Science
- Human Society and Its Environment (HSIE)
- Mathematics

Students also study three elective courses in subjects offered by all Key Learning Areas, including courses in:

- Languages
- Aboriginal Studies
- Agriculture Technology
- Graphics Technology
- Engineering Technology
- Metal Technology
- Timber Technology
- Physical Activities and Sport Studies (PASS)
- Photography and Digital Media
- Work Education
- Food Technology
- Dance
- Drama
- Information and Software Technology
- Design and Technology
- Elective History
- Textiles Technology
- Music
- Visual Arts
- Child Studies
- Rugby League

Assessment and Reporting

Students are continually assessed on their performance in these courses. Assessment information is used to produce school reports, which are issued to students at the end of each semester for delivery home.

Reports for students in Stage 5 contain information on the student's achievement of outcomes and work skills during that semester.

Flexible Progression

Unique structures in the school allow students to follow flexible progression in courses in which they have demonstrated an outstanding level of achievement of outcomes.

CURRICULUM – YEARS 11 & 12 (STAGE 6)

Core Curriculum

Students in Years 11 & 12 are required to complete specific courses to meet the Board of Studies' requirements to achieve a Higher School Certificate at the end of Year 12.

These include:

- 2 units of English over two years
- A minimum of 10 HSC units
- A minimum of 12 Preliminary units
- A number of other requirements outlined in the Preliminary and HSC Assessment Schedules issued to students.

Students wishing to attend university at the conclusion of Year 12 must meet some additional requirements laid down by the Universities Admissions Centre (UAC), which uses student results to determine their Australian Tertiary Admission Rank (ATAR). The ATAR is used to determine eligibility for specific courses.

Tamworth High School has some special arrangements to ensure the broadest possible curriculum options for students. As well as the vast range of courses delivered at the school, students can also access courses offered at other schools in Tamworth (Oxley, Peel and Farrer), courses at TAFE and through Distance Education.

Assessment and Reporting

Students are continually assessed on their performance in these courses. Assessment information is used to produce school reports, which are issued to students at the end of each semester.

Reports for students in Stage 6 contain information on the student's achievement of outcomes and work skills during that semester.

At the conclusion of Year 12, students sit state-wide examinations in most courses, conducted by the NSW Board of Studies. This statutory body reports on these examination marks, awards the Higher School Certificate to eligible students and provides a Record of Achievement showing all courses and grades completed during Stage 6.

Flexible Progression

Unique structures in the school allow students to follow flexible progression in courses in which they have demonstrated an outstanding level of achievement of outcomes.
